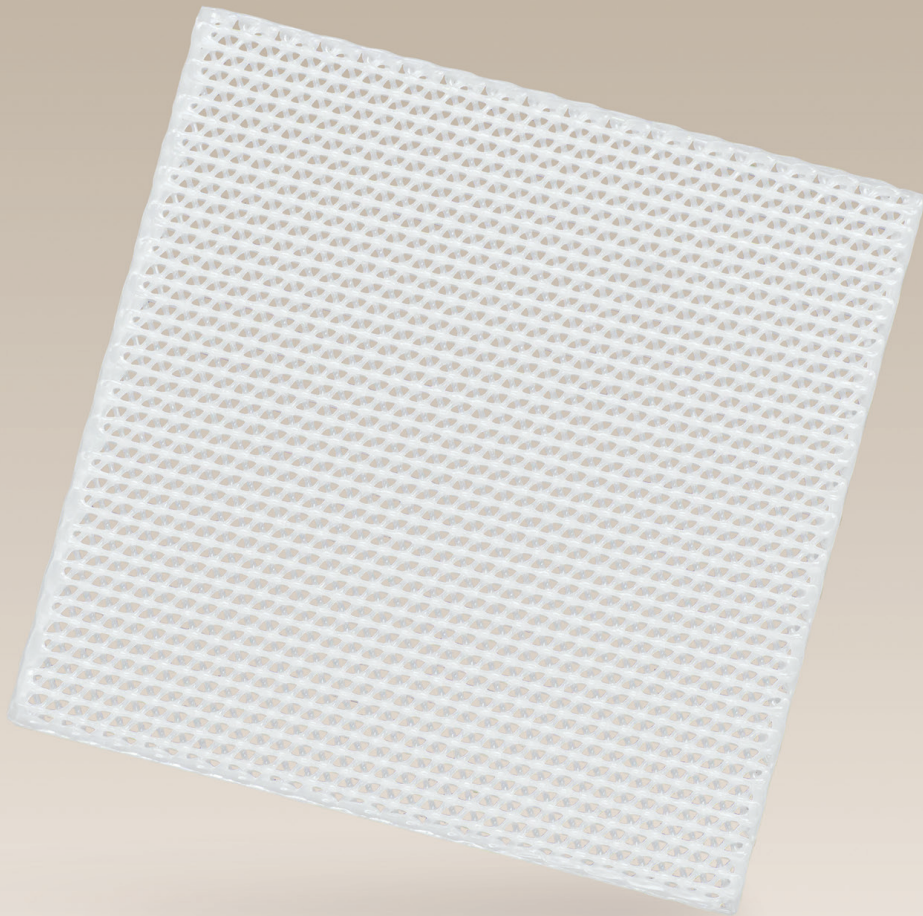


OSTEOMESH®

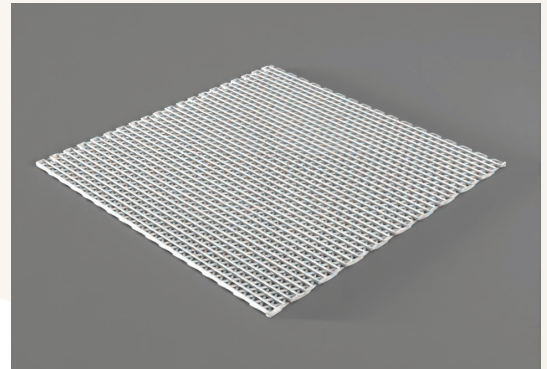
In Orbital Floor Repair



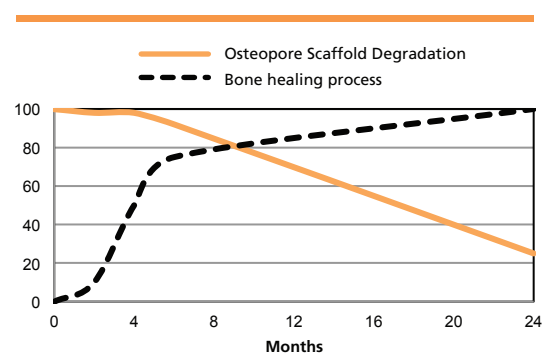
1

FEATURES & BENEFITS

- **Osteomesh®** is designed and intended for use in repair of orbital floor fracture.
- Manufactured using polycaprolactone (PCL), **Osteomesh®** is a biodegradable polymer that resorbs fully in vivo by hydrolysis. It is then fully metabolized without any toxic byproducts.
- **Osteomesh®** is biomimetic regenerative implant. Its porous interconnected microarchitecture demonstrates mechanical properties similar to human cancellous bone, providing a regenerative niche suitable for bone formation.
- **Osteomesh®** provides structural stability through our fracture healing and bone remodelling. It is fully resorbed in approximately 18-24 months depending on the patient anatomy and metabolism.

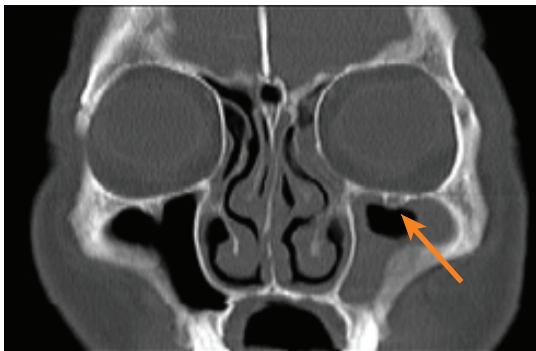


Scaffold degradation over 24 months



2

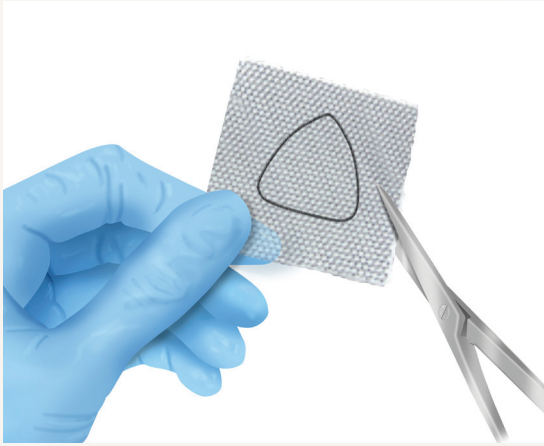
PROVEN CLINICAL PERFORMANCE



Unpublished, data on file

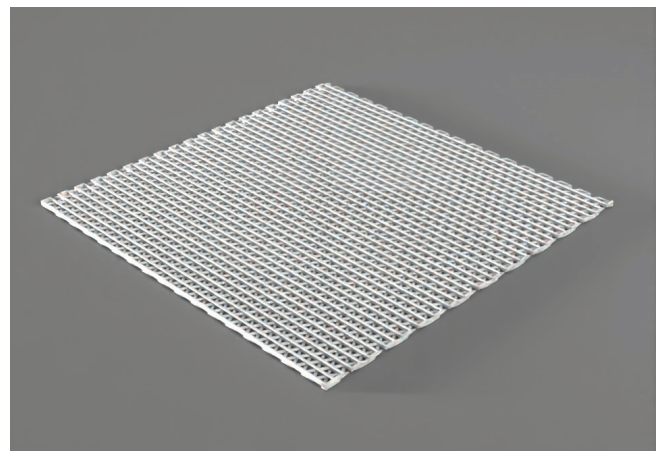
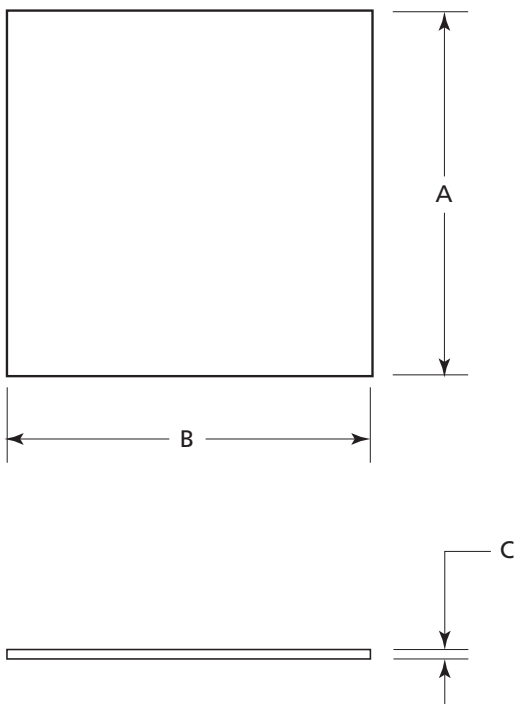
- Better outcomes with excellent patient satisfaction.
- Lower complication rates when compared to metal implants.
- More than 2 years of followup shows host-implant compatibility with no infection and migration of implant.
- No late complications such as infection or implant extrusion.

3 VERSATILE & EASY TO HANDLE



- **Osteomesh®** is designed to provide surgeons with an enhanced reconstruction solution.
- Handling advantage allows **Osteomesh®** to be molded using warm saline $\leq 45^{\circ}\text{C}$ and cut with sharp scissors to match the defect shape and size.
- No special instruments and extra fixation is required.
- Versatile product range comes in different sizes and thicknesses which can fit both sides of the face.
- **Osteomesh®** is provided in sterile packaging and it is ready to use.

4 PRODUCT SPECIFICATIONS



PRODUCT CODE	A (mm)	B (mm)	C (mm)
PC11 (25, 25, 1)	25	25	1
PC11 (25, 25, 1.25)	25	25	1.25
PC11 (25, 25, 1.5)	25	25	1.5
PC11 (50, 50, 1)	50	50	1
PC11 (50, 50, 1.25)	50	50	1.25
PC11 (50, 50, 1.5)	50	50	1.5

For professional use.

CAUTION: See instructions for use for full prescribing information, including indications, contraindications, warnings, and precautions.

Osteopore®, the stylized Osteopore® logo, Osteomesh® are registered trademarks of Osteopore International Pte Ltd.

© 2021 Osteopore®. All rights reserved.

MCN 01 021B XE Rev 0

Osteopore®
Empowering Natural Tissue Regeneration

Osteopore International | SINGAPORE
2 Tukang Innovation Grove #09-06, MedTech Hub, Singapore 618305